



# Kill fleas, ticks & lice on dogs & cats



## For extra protection



Don't forget to treat your home with an environmental household spray:

- ✓ Controls fleas for up to 6 months and other crawling pests for up to 8 weeks.
- ✓ For use as a crack/crevice & spot treatment or as a direct spray
- ✓ Can be used in domestic premises (kitchen, soft furnishings, hard porous & non-porous surfaces)



# Guardian<sup>®</sup> plus spot-on



# The Solution To Your Problem

## Guardian<sup>®</sup> Plus Explained

Guardian<sup>®</sup> Plus is the next generation of protection against fleas, ticks, and biting lice. The advanced formulation not only kills adult fleas but also prevents their eggs or larvae from hatching. This triple-action solution stops the problem at the source, keeping your pet and home safe from infestation.

- ✓ Kills adult fleas in 24 hours
- ✓ Kills adult ticks in 48 hours
- ✓ Stops eggs and larvae from developing



Johnson's Veterinary Products Ltd  
5 Reddicap Trading Estate  
Sutton Coldfield, West Midlands,  
B75 7DF UK  
Registered in England 489549

Johnson's Veterinary Products Europe Ltd  
71 Baggot Street  
Dublin 2, Co Dublin  
D02 P593  
Registered in Ireland 760696

+44 (0)121 378 1684 info@johnsons-vet.com

www.jvp.co.uk



## When To Treat

It is important that we treat our pets regularly to protect against the threat of fleas, ticks & lice. When treating an infestation, all pets in the household must be treated at the same time.

## How to apply Guardian® Plus effectively

Please follow the application instructions carefully to ensure an effective treatment is achieved and remember, it's important you apply Guardian® Plus to your pet's skin, not its fur.

1. Remove the pipette from the foil packet, which should be retained for disposal.
2. Hold the pipette upright and away from your face.
3. Snap off the tip along the crease.
4. Use your fingers to part your pet's fur on the back of its neck, where it can't reach to scratch or lick the solution.
5. Place the tip of the open pipette on the skin and squeeze until all the solution is applied.
6. Place the empty pipette back into the foil packet and dispose of it safely in the household rubbish – retain the instruction leaflet.

Please note, it is important you do not wash your pet or let them swim in natural watercourses for 2 days after application – the solution can be harmful to aquatic life.

## Usage Checklist

- ✓ Your cat or dog must be at least 8 weeks old
- ✓ Your cat must weigh at least 1kg, or your dog must weigh at least 2kg
- ✓ Ensure you have the correct treatment pack for your pet
- ✓ Guardian® Plus can be used on pregnant cats and dogs



# Why spot-on?

Fleas and ticks are becoming an increasing problem with pet owners. Guardian® Spot-on is an easy yet effective way of protecting your pet against flea and tick infestation. Regular treatment offers year round protection and each pipette lasts for up to 5 weeks.

### for fleas...

Only 5% of the entire flea population is the adult flea! That means that for every 5 fleas you see, there are 95 eggs, larvae or pupae elsewhere. To think that every adult female can lay 2,000 eggs (50 a day) is pretty scary, so you can see how even a few adults can mean serious problems in a short period of time if your pets aren't protected.

### for lice...

Female lice can lay up to 6–10 eggs (nits) per day over their 30 day lifespan, 100–300 eggs in total. Lice are species-specific, meaning the lice that affect pets don't typically spread to humans.



### for ticks...

Ticks wait at the top of vegetation for unsuspecting animals and can also attach to humans. They can be found in parks, woodlands and fields.

They transmit disease after 48 hours and are most active in the spring and summer, with females capable of laying 2,000 to 18,000 eggs!

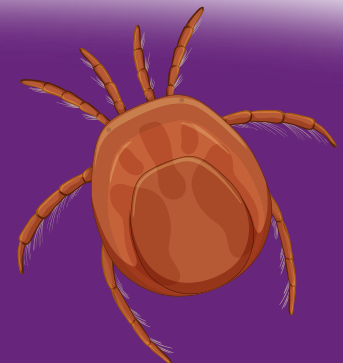
The flea lifecycle begins when the adult fleas lay eggs in the pet's coat

The eggs drop off as the pet moves around the home



Within a few days, the eggs hatch into larvae

Pupae develop before hatching as new adult fleas to complete the life cycle



Ticks can transmit infections to humans, including Lyme disease, which can cause long term health complications.